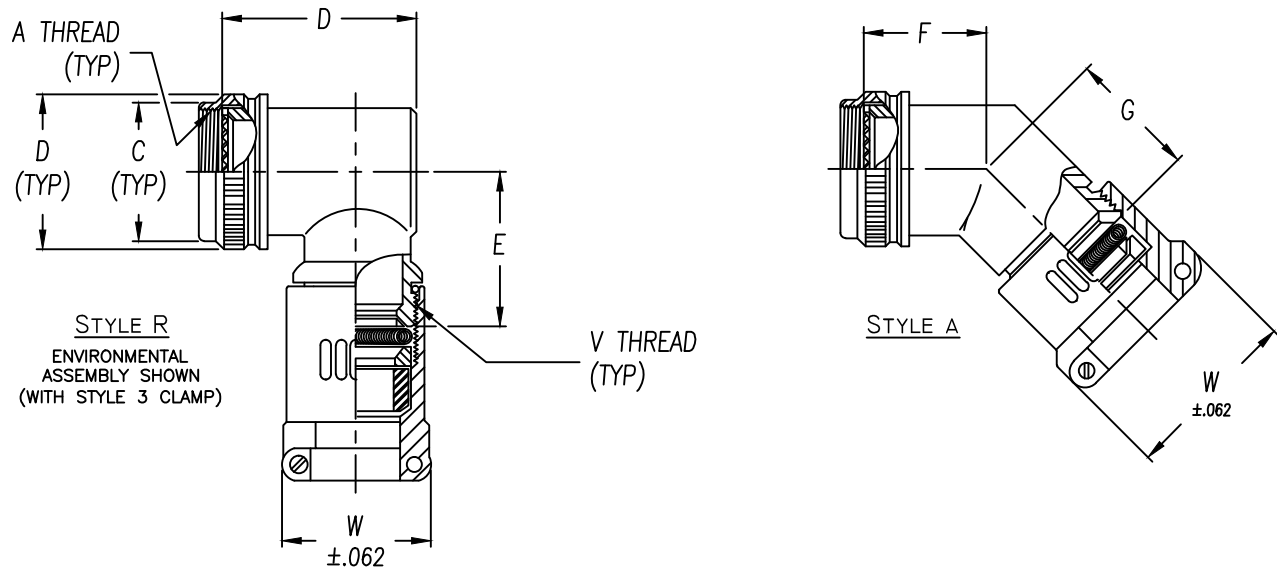




**Table 2 - Cable Entry Data**

| ENTRY ORDER NUMBER | ENVIRONMENTAL GLAND RANGE |       | NON ENVIRONMENTAL CABLE RANGE |       | V UNIFIED THREAD |
|--------------------|---------------------------|-------|-------------------------------|-------|------------------|
|                    | MAX                       | MIN   | MAX                           | MIN   |                  |
| 03                 | .250                      | .156  | .250                          | .156  | .500-28          |
| 04                 | .312                      | .188  | .312                          | .188  | .625-24          |
| 06                 | .438                      | .281  | .438                          | .281  | .750-20          |
| 08                 | .562                      | .375  | .562                          | .344  | .875-20          |
| 10                 | .625                      | .500  | .625                          | .375  | 1.000-20         |
| 12                 | .750                      | .500  | .750                          | .438  | 1.188-18         |
| 16                 | .938                      | .625  | .938                          | .562  | 1.438-18         |
| 20                 | 1.250                     | .938  | 1.250                         | .750  | 1.750-18         |
| 24                 | 1.375                     | 1.000 | 1.375                         | .781  | 2.000-18         |
| 28                 | 1.625                     | 1.250 | 1.625                         | .969  | 2.250-16         |
| 32                 | 1.875                     | 1.500 | 1.875                         | 1.125 | 2.500-16         |

WHEN MAXIMUM CABLE ENTRY EXCEEDS THE CONNECTOR INTERFACE DIAMETER, A 2 PIECE ADAPTER WILL BE SUPPLIED.



ASSEMBLY PART NUMBER

TO ESTABLISH YOUR P/N, USE THE FOLLOWING EXAMPLE

**E 41 38 S 23 08 9 B 51**

FUNCTION DESIGNATOR  
E - EMI ADAPTER

CONNECTOR CODE NUMBER - TABLE 1 (6)

SERIES PART NUMBER

ADAPTER STYLE  
R = 90° ADAPTER  
A = 45° ADAPTER

ACCESSORY ORDER NUMBER-TABLE 1

MOD CODE (6)

PLATING CODE NUMBER-TABLE 4 (6)

GLAND & O-RING MATERIAL OPTION  
B - NEOPRENE & BUNA-N  
S - SILICONE  
N - NONE REQUIRED (NON ENVIRONMENTAL)

CABLE STRAIN-TABLE V (8)

CABLE ENTRY ORDER NUMBER-TABLE 2

# Table 1 - Order Number Data

## Accessory Order Number By Connector Code & Shell Size

| ORDER NUMBER | Accessory Order Number By Connector Code & Shell Size |                           |                                 |                                  |                                |  |                         |                            |                                   |                                |    |    |    |           | ORDER NUMBER |                        |                  |                  |                      |                  |                        |                  |
|--------------|---|---------------------------|---------------------------------|----------------------------------|--------------------------------|--|-------------------------|----------------------------|-----------------------------------|--------------------------------|----|----|----|-----------|--------------|------------------------|------------------|------------------|----------------------|------------------|------------------------|------------------|
|              | MS3100 SERIES<br>MIL-DTL-5015<br>SOLDER CONTACT       | MIL-DTL-26482<br>SERIES 1 | MIL-DTL-22992<br>CLASS C, J & R | MIL-DTL-38999<br>SERIES III & IV | MIL-DTL-38999<br>SERIES I & II | MIL-DTL-5015 CRIMP<br>MIL-DTL-26482 SER 2<br>MIL-DTL-83723 SER III | MIL-C-81703<br>NAS 1599 | LITTON VEAM,<br>CIR SERIES | MIL-C-81511<br>SERIES 1, 2, 3 & 4 | PATT 105, PATT 603<br>PATT 608 | 54 | 64 | 61 | 76        |              | A<br>UNIFIED<br>THREAD | B<br>MAX<br>DIA. | C<br>MAX<br>DIA. | D (7)<br>MAX<br>DIM. | E<br>MAX<br>DIM. | F (7)<br>±.125<br>DIM. | G<br>MAX<br>DIM. |
| 01           | 8S (B)  |                           |                                 |                                  |                                |  |                         |                            |                                   |                                |    |    |    | .375-32   | .750         | .531                   | 1.031            |                  | .500                 |                  |                        | 01               |
| 03           | 8S (A)  |                           |                                 |                                  |                                |  |                         |                            |                                   |                                |    |    |    | .438-27   | .812         | .594                   | 1.094            | 1.188            | .500                 |                  |                        | 03               |
| 04           | 8S (C)  | 8                         |                                 |                                  | 8, 9                           |  |                         |                            |                                   |                                |    |    | 8  | .438-28   | .812         | .594                   | 1.000            |                  | .750                 |                  |                        | 04               |
| 05           |   |                           |                                 |                                  |                                | 8 & 8S   |                         |                            |                                   |                                |    |    |    | .500-20   | .875         | .656                   | .938             |                  | .719                 | 1.062            |                        | 05               |
| 06           | 10S (-)   |                           |                                 |                                  |                                |  |                         | 8, A                       |                                   |                                |    |    |    | .500-28   | .875         | .656                   | 1.562            |                  | 1.062                |                  |                        | 06               |
| 07           |   |                           |                                 | 9, A                             |                                |  |                         |                            |                                   |                                |    |    |    | M12 x 1.0 | .719         | .656                   | .938             | 1.250            | .500                 |                  |                        | 07               |
| 08           | 10SL (C)  | 10                        |                                 |                                  | 10, 11                         |  | 3                       |                            |                                   |                                |    | 10 |    | .562-24   | .844         | .719                   | 1.375            |                  | .750                 |                  |                        | 08               |
| 10           | 10SL(A,B),<br>12, 12S(B,C)                            |                           |                                 |                                  |                                | 10, 10S, 10SL  |                         |                            | 12                                |                                |    |    |    | .625-24   | 1.000        | .781                   | 1.562            |                  | 1.062                |                  |                        | 10               |
| 11           |   |                           |                                 |                                  |                                |  |                         |                            | 10, B                             |                                |    |    |    | .625-28   | 1.000        | .781                   | 1.688            | 1.312            | 1.062                | 1.094            |                        | 11               |
| 12           |   |                           |                                 | 11, B                            |                                |  |                         |                            |                                   |                                |    |    |    | M15 x 1.0 | .844         | .781                   | 1.125            |                  | .500                 |                  |                        | 12               |
| 13           | 12 & 12S (A)  | 12                        |                                 |                                  | 12, 13                         |  |                         |                            |                                   |                                |    | 12 |    | .688-24   | 1.062        | .844                   | 1.500            |                  | .750                 |                  |                        | 13               |
| 15           | 14 & 14S (-)  |                           | 12                              |                                  |                                | 12 & 12S   | 7                       | 14                         |                                   |                                |    |    |    | .750-20   | 1.125        | .906                   | 1.812            |                  | .875                 | 1.125            |                        | 15               |
| 16           |   |                           |                                 | 13, C                            |                                |  |                         |                            |                                   |                                |    |    |    | M18 x 1.0 | .969         | .906                   | 1.188            | 1.375            | .562                 | 1.125            |                        | 16               |
| 18           |   | 14                        |                                 |                                  | 14, 15                         |  |                         |                            |                                   |                                |    | 14 |    | .812-20   | 1.188        | .969                   | 1.500            |                  | .812                 |                  |                        | 18               |
| 19           | 16 & 16S (-)  |                           | 14                              |                                  |                                | 14 & 14S   | 12                      | 16                         |                                   |                                |    |    |    | .875-20   | 1.250        | 1.031                  | 1.875            |                  | .750                 |                  |                        | 19               |
| 20           |   |                           |                                 |                                  |                                |  |                         |                            | 14, D                             |                                |    |    |    | .875-28   | 1.250        | 1.031                  | 1.938            | 1.438            | 1.125                |                  |                        | 20               |
| 21           |   |                           |                                 | 15, D                            |                                |  |                         |                            |                                   |                                |    |    |    | M22 x 1.0 | 1.094        | 1.031                  | 1.312            |                  | .562                 |                  |                        | 21               |
| 23           |   | 16                        |                                 |                                  | 16, 17                         |  |                         |                            |                                   |                                |    | 16 |    | .938-20   | 1.312        | 1.094                  | 1.625            |                  | .875                 |                  |                        | 23               |
| 24           | 18 (-)  |                           | 16                              |                                  |                                | 16 & 16S   | 19                      | 18                         |                                   |                                |    |    |    | 1.000-20  | 1.375        | 1.156                  | 2.000            |                  | .719                 |                  |                        | 24               |
| 25           |   |                           |                                 |                                  |                                |  |                         |                            | 16, E                             |                                |    |    |    | 1.000-28  | 1.375        | 1.156                  | 2.062            | 1.500            | 1.156                |                  |                        | 25               |
| 26           |   |                           |                                 | 17, E                            |                                |  |                         |                            |                                   |                                |    |    |    | M25 x 1.0 | 1.219        | 1.156                  | 1.438            |                  | .594                 | 1.188            |                        | 26               |
| 28           |   | 18                        |                                 |                                  | 18, 19                         | 18   | 27                      |                            |                                   |                                |    | 18 |    | 1.062-18  | 1.438        | 1.219                  | 1.688            |                  | .875                 |                  |                        | 28               |
| 29           | 20 (-)  |                           | 18                              |                                  |                                |  |                         |                            | 20                                |                                |    |    |    | 1.125-18  | 1.500        | 1.281                  | 2.156            |                  | .938                 |                  |                        | 29               |
| 30           | 20 (R)  |                           |                                 |                                  |                                |  |                         |                            |                                   |                                |    |    |    | 1.125-24  | 1.500        | 1.281                  | 1.938            | 1.562            | .625                 |                  |                        | 30               |
| 31           |   |                           |                                 |                                  |                                |  |                         |                            | 18, F                             |                                |    |    |    | 1.125-28  | 1.500        | 1.281                  | 2.125            |                  | 1.188                |                  |                        | 31               |
| 32           |   |                           |                                 | 19, F                            |                                |  |                         |                            |                                   |                                |    |    |    | M28 x 1.0 | 1.344        | 1.281                  | 1.500            |                  | .625                 |                  |                        | 32               |
| 34           |   | 20                        |                                 |                                  | 20, 21                         | 20   | 37                      |                            |                                   |                                |    | 20 |    | 1.188-18  | 1.562        | 1.344                  | 1.812            |                  | .875                 |                  |                        | 34               |
| 35           | 22 (-)  |                           | 20                              |                                  |                                |  |                         |                            | 22                                |                                |    |    |    | 1.250-18  | 1.625        | 1.406                  | 2.250            |                  | .938                 |                  |                        | 35               |
| 36           |   |                           |                                 |                                  |                                |  |                         |                            | 20, G                             |                                |    |    |    | 1.250-28  | 1.625        | 1.406                  | 2.250            | 1.625            | 1.250                | 1.219            |                        | 36               |
| 37           |   |                           |                                 | 21, G                            |                                |  |                         |                            |                                   |                                |    |    |    | M31 x 1.0 | 1.469        | 1.406                  | 1.625            |                  | .688                 |                  |                        | 37               |
| 39           |   | 22                        |                                 |                                  | 22, 23                         | 22   |                         |                            |                                   |                                |    | 22 |    | 1.312-18  | 1.688        | 1.469                  | 1.938            |                  | .938                 |                  |                        | 39               |
| 40           | 24 (-)  |                           | 22                              |                                  |                                |  |                         |                            | 24                                |                                |    |    |    | 1.375-18  | 1.750        | 1.531                  | 2.375            |                  | 1.000                |                  |                        | 40               |
| 41           |   |                           |                                 |                                  |                                |  |                         |                            | 22, H                             |                                |    |    |    | 1.375-28  | 1.750        | 1.531                  | 2.375            |                  | 1.250                |                  |                        | 41               |
| 42           |   |                           |                                 | 23, H                            |                                |  |                         |                            |                                   |                                |    |    |    | M34 x 1.0 | 1.594        | 1.531                  | 1.750            |                  | .656                 | 1.250            |                        | 42               |
| 44           |   | 24                        |                                 |                                  | 24, 25                         | 24   |                         |                            |                                   |                                |    | 24 |    | 1.438-18  | 1.812        | 1.594                  | 2.000            | 1.688            | 1.000                |                  |                        | 44               |
| 45           |   |                           |                                 |                                  |                                |  | 61                      |                            |                                   |                                |    |    |    | 1.500-18  | 1.875        | 1.656                  | 1.875            |                  | .938                 | 1.438            |                        | 45               |
| 46           |   |                           |                                 |                                  |                                |  |                         |                            | 24, J                             |                                |    |    |    | 1.500-28  | 1.875        | 1.656                  | 2.500            |                  | 1.250                |                  |                        | 46               |
| 47           |   |                           |                                 | 25, J                            |                                |  |                         |                            |                                   |                                |    |    |    | M37 x 1.0 | 1.719        | 1.656                  | 1.875            |                  | .688                 | 1.250            |                        | 47               |
| 48           |   |                           |                                 |                                  |                                |  |                         |                            |                                   |                                |    |    |    | 1.562-18  | 1.938        | 1.719                  | 2.125            |                  | 1.062                |                  |                        | 48               |
| 49           | 28 (-)  |                           | 24                              |                                  |                                |  |                         |                            | 28                                |                                |    |    |    | 1.625-18  | 2.000        | 1.781                  | 2.500            | 1.812            | 1.250                | 1.312            |                        | 49               |
| 51           |   |                           |                                 |                                  |                                | 28   |                         |                            |                                   |                                |    |    |    | 1.750-18  | 2.125        | 1.906                  | 2.062            |                  | .938                 |                  |                        | 51               |
| 52           | 32 (B,C)  |                           | 28                              |                                  |                                |  |                         |                            | 32                                |                                |    |    |    | 1.875-16  | 2.250        | 2.031                  | 2.750            | 1.938            | 1.125                | 1.344            |                        | 52               |
| 53           | 32 (A,R)  |                           |                                 |                                  |                                |  |                         |                            |                                   |                                |    |    |    | 1.906-18  | 2.281        | 2.062                  | 2.438            |                  | .750                 |                  |                        | 53               |
| 54           |   |                           |                                 |                                  |                                | 32   |                         |                            |                                   |                                |    |    |    | 2.000-18  | 2.375        | 2.156                  | 2.312            |                  | .969                 |                  |                        | 54               |
| 55           | 36 (B)  |                           | 32                              |                                  |                                |  |                         |                            | 36                                |                                |    |    |    | 2.062-16  | 2.469        | 2.219                  | 3.000            |                  | .969                 |                  |                        | 55               |
| 56           | 36 (R)  |                           |                                 |                                  |                                |  |                         |                            |                                   |                                |    |    |    | 2.062-24  | 2.469        | 2.219                  | 1.875            | 2.062            | .812                 | 1.406            |                        | 56               |
| 57           | 36 (C)  |                           |                                 |                                  |                                |  |                         |                            |                                   |                                |    |    |    | 2.125-16  | 2.500        | 2.281                  | 1.875            |                  | .812                 |                  |                        | 57               |
| 58           | 36 (A)  |                           |                                 |                                  |                                |  |                         |                            |                                   |                                |    |    |    | 2.125-18  | 2.500        | 2.281                  | 1.875            |                  | .812                 |                  |                        | 58               |
| 59           |   |                           |                                 |                                  |                                | 36   |                         |                            |                                   |                                |    |    |    | 2.250-16  | 2.625        | 2.406                  | 2.438            |                  | 1.031                |                  |                        | 59               |
| 60           | 40 (B)  |                           | 36                              |                                  |                                |  |                         |                            | 40                                |                                |    |    |    | 2.312-16  | 2.719        | 2.469                  | 3.250            | 2.188            | 1.000                | 1.438            |                        | 60               |
| 61           | 40 (A,C)  |                           |                                 |                                  |                                |  |                         |                            |                                   |                                |    |    |    | 2.375-16  | 2.750        | 2.531                  | 2.000            |                  | .875                 |                  |                        | 61               |
| 62           |   |                           |                                 |                                  |                                | 40   |                         |                            |                                   |                                |    |    |    | 2.500-16  | 2.875        | 2.656                  | 2.688            | 2.750            | 1.125                | 1.500            |                        | 62               |

NOTES: UNLESS OTHERWISE SPECIFIED.

1 THREADS ARE RIGHT HAND IN ACCORDANCE WITH FED-STD-H28, CLASS 2B.

2 THREADS NOTED ARE LEFT HAND, CLASS 2B.

3 THREADS NOTED ARE ISO METRIC, CLASS 6H.

4 CODE 18 SHELL SIZES ARE FOLLOWED IN PARENTHESIS BY CONNECTOR MFR CODE. SEE CONNECTOR CODE 18 CHART AT RIGHT & EXAMPLE PART NUMBER FOR DETAILS.

5 TABLE 1 LISTS THE MOST USED CONNECTOR CODES. SEE SECTION 11 FOR OTHER CODES AVAILABLE AND COMPLETE CONNECTOR PART NUMBER CROSS REFERENCE.

6 SEE SUPPORT DATA SECTION FOR PLATING AND MODIFICATION CODE OPTIONS.

7 ADD .25 TO "D" & "F" FOR CONNECTOR CODES 30, 32 & 61.

8 SEE SUPPORT DATA SECTION FOR TABLE V & AVAILABLE STYLES

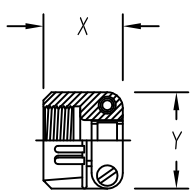
### 4 Connector Code 18 Chart

| CONNECTOR CODE | CONNECTOR MANUFACTURER (MS3100, MS3101, MS3106 & MS3107) |
|----------------|--|
| A              | AMPHENOL, CLASS A  |
| B              | BENDIX, CLASS A, E & R                                   |
| C              | CANNON, CLASS A, E & R                                   |
| D              | MFR. UNKNOWN, CLASS A, E & R                             |
| R              | AMPHENOL, CLASS R  |
| -              | MFR. CODE NOT REQUIRED                                   |

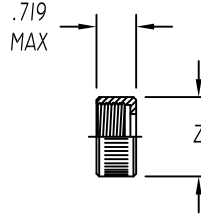


**Table 2 - Environmental / Non-Environmental Cable Entry Data**

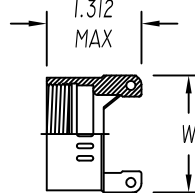
| ENTRY ORDER NUMBER | ENVIRONMENTAL |       | NON ENVIRONMENTAL |       | V UNIFIED THREAD | R MAX DIM. | S MAX DIM. | T MAX DIM. | U MAX DIM. | W MAX DIM. | X MAX DIM. | Y MAX DIM. | Z MAX DIA. |
|--------------------|---------------|-------|-------------------|-------|------------------|------------|------------|------------|------------|------------|------------|------------|------------|
|                    | GLAND RANGE   |       | CABLE RANGE       |       |                  |            |            |            |            |            |            |            |            |
|                    | MAX           | MIN   | MAX               | MIN   |                  |            |            |            |            |            |            |            |            |
| △ 03               | .250          | .156  | .250              | .156  | .500-28          | N / A      | .812       | 1.375      | .812       | N / A      | .844       | .781       | .656       |
| 04                 | .312          | .188  | .312              | .188  | .625-24          | 1.031      | .937       | 1.375      | .937       | .875       | .844       | .906       | .781       |
| 06                 | .438          | .281  | .438              | .281  | .750-20          | 1.031      | 1.062      | 1.375      | 1.062      | 1.000      | .906       | 1.094      | .906       |
| 08                 | .562          | .375  | .562              | .344  | .875-20          | 1.031      | 1.188      | 1.375      | 1.188      | 1.125      | .969       | 1.188      | 1.031      |
| 10                 | .625          | .500  | .625              | .375  | 1.000-20         | 1.094      | 1.312      | 1.437      | 1.312      | 1.250      | .969       | 1.281      | 1.156      |
| 12                 | .750          | .500  | .750              | .438  | 1.188-18         | 1.219      | 1.562      | 1.437      | 1.562      | 1.375      | .969       | 1.500      | 1.344      |
| △ 14               | .875          | .750  | .875              | .719  | 1.250-18         | N / A      | N / A      | N / A      | N / A      | 1.500      | N / A      | N / A      | N / A      |
| 16                 | 1.000         | .844  | 1.000             | .781  | 1.438-18         | 1.219      | 1.750      | 1.562      | 1.750      | 1.625      | 1.062      | 1.719      | 1.594      |
| 20                 | 1.250         | .938  | 1.250             | .750  | 1.750-18         | 1.344      | 2.250      | 1.812      | 2.250      | 1.750      | 1.125      | 2.062      | 1.906      |
| 24                 | 1.375         | 1.000 | 1.375             | .781  | 2.000-18         | N / A      | 2.375      | 2.062      | 2.375      | N / A      | 1.188      | 2.312      | 2.156      |
| 28                 | 1.625         | 1.250 | 1.625             | .969  | 2.250-16         | N / A      | 2.625      | 2.062      | 2.625      | N / A      | 1.719      | 2.719      | 2.406      |
| 32                 | 1.875         | 1.500 | 1.875             | 1.125 | 2.500-16         | N / A      | 2.812      | 2.188      | 2.812      | N / A      | 1.781      | 2.969      | 2.656      |



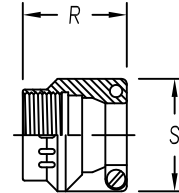
**STYLE 1** △  
 AS85049/41A CLAMP  
 (MS 3057\*\*A)



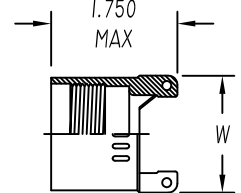
**STYLE 2** △  
 NUT



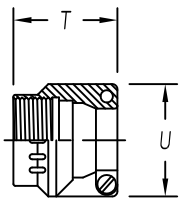
**STYLE 3** △  
 NON-ENVIRONMENTAL



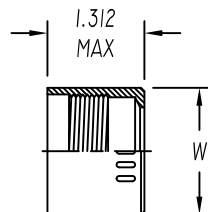
**STYLE 3** △  
 NUT ENVIRONMENTAL  
 (AS85049/1)  
 (MS 3057-\*\*B)



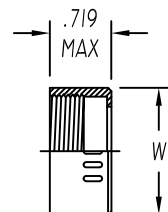
**STYLE 3** △  
 ENVIRONMENTAL



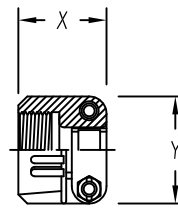
**STYLE 4** △  
 STRAIN RELIEF ENVIRONMENTAL  
 (AS85049/2)  
 (MS 3057-\*\*C)



**STYLE 4** △  
 ENVIRONMENTAL



**STYLE 4** △  
 NON-ENVIRONMENTAL



**STYLE 9** △  
 STRAIN-RELIEF CLAMP WITH TELESCOPING SCREWS

NOTES: UNLESS OTHERWISE SPECIFIED

△1 AVAILABLE ONLY ON: A\*\*01, A\*\*30, E\*\*01, E\*\*03, E\*\*04, E\*\*05, E\*\*07, E\*\*21, E\*\*30, & E\*\*33

△2 AVAILABLE ONLY ON: E\*\*15, E\*\*17, E\*\*38, E\*\*40, & E\*\*41

3. CONSULT FACTORY FOR SIZES AND INFORMATION NOT LISTED